

Fitting Instruction

TOWBAR
For Mitsubishi ASX

CL109AS/N
CL109AQ/N

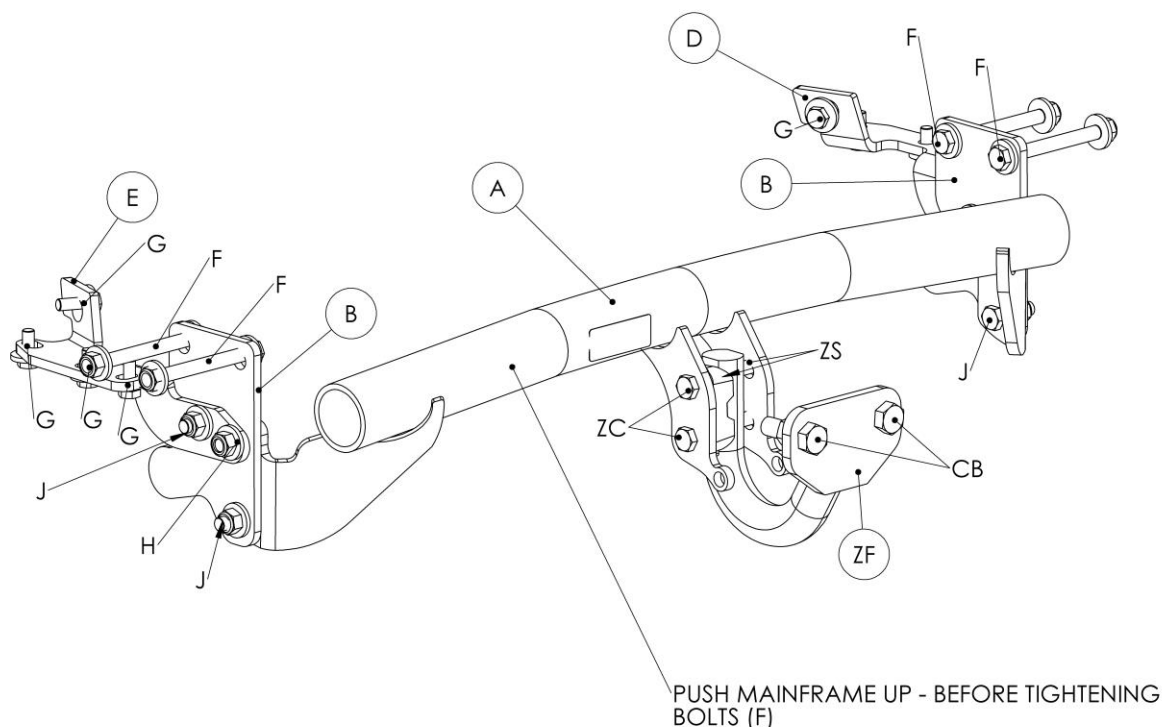
MATERIALS

A	1	Cross Bar
B	2	Side Plate
D	1	Right hand sidearm
E	1	Left hand sidearm
F	4	M12 x 1.75 x 110mm Bolts ,8 Flat Washers (30mm OD) and Nyloc Nuts
G	8	M10 x 1.25 x 30mm Bolts, Lock Washers and Flat Washers (30mm OD)
H	2	M12 x 1.75 x 40mm Bolts, Nyloc Nuts and Flat Washers (30mm OD)
J	4	M12 x 1.75 x 50mm Bolts, Nyloc Nuts and Flat Washers (30mm OD)
ZQ	1	Detachable Neck assembly or Fixed Swan neck attachment

FITTING

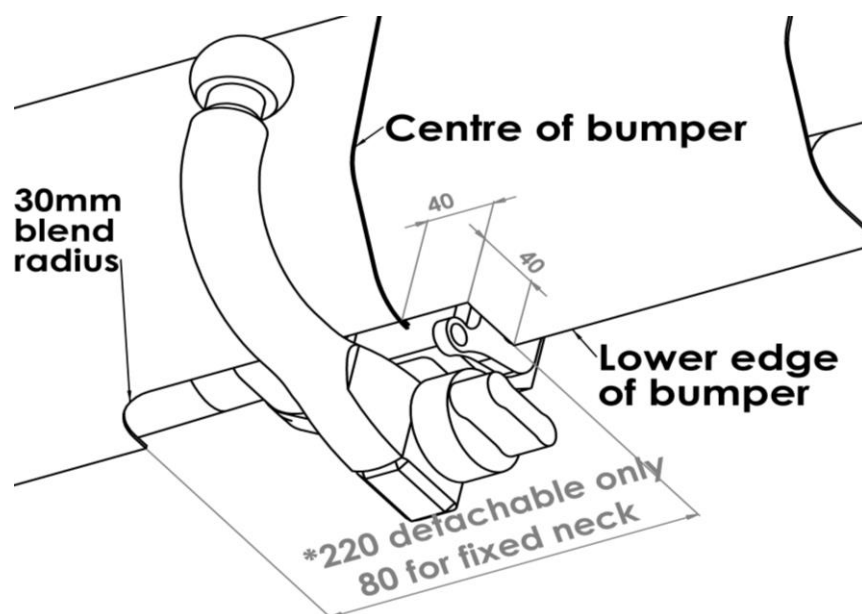
1. Remove rear silencer box for ease of access. Remove towing eye from left hand side and discard.
2. **Very loosely** attach Side Plates (B) and Sidearms (D & E) using Bolts (F) (G) with Flat Washers to vehicle chassis.
3. Facelift models with a flat lower section require a bumper cut as shown below – **Check by offering up crossbar (A) before cutting.**
4. Insert Cross bar (A) inside Bumper (taking care not to trap number plate wiring loom) and attach to vehicle chassis using Bolts (J) and (H) with Flat washers.
5. Bend back lower bumper tags slightly to allow fitment of neck housing.
6. Fully Tighten Bolts and refit silencer – take care with towbar electrics when securing around exhaust area.
7. **Important:** To enable the flip-up electrical plate to be rotated inside bumper a side exit socket gasket is required; this will prevent wire contact with exhaust and causing damage.

Recommended torque settings: Grade 8.8 bolts: M8 - 24Nm, M10 - 52 Nm, M12 - 95 Nm, M14 - 130 Nm, M16 - 200 Nm
Grade 10.9: M12 – 120Nm, M10 – 70Nm M8- 35Nm



W0001CL109A/N-FIT\$0121212180000

Bumper cut pre- 2018 models:



Bumper cut post- 2018 face lift models:

